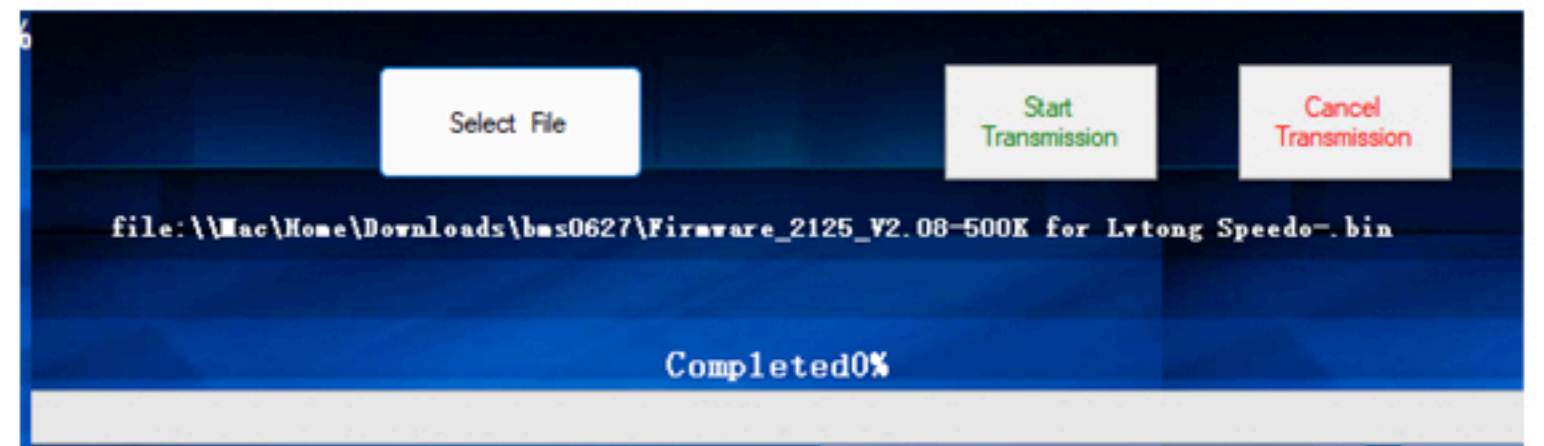
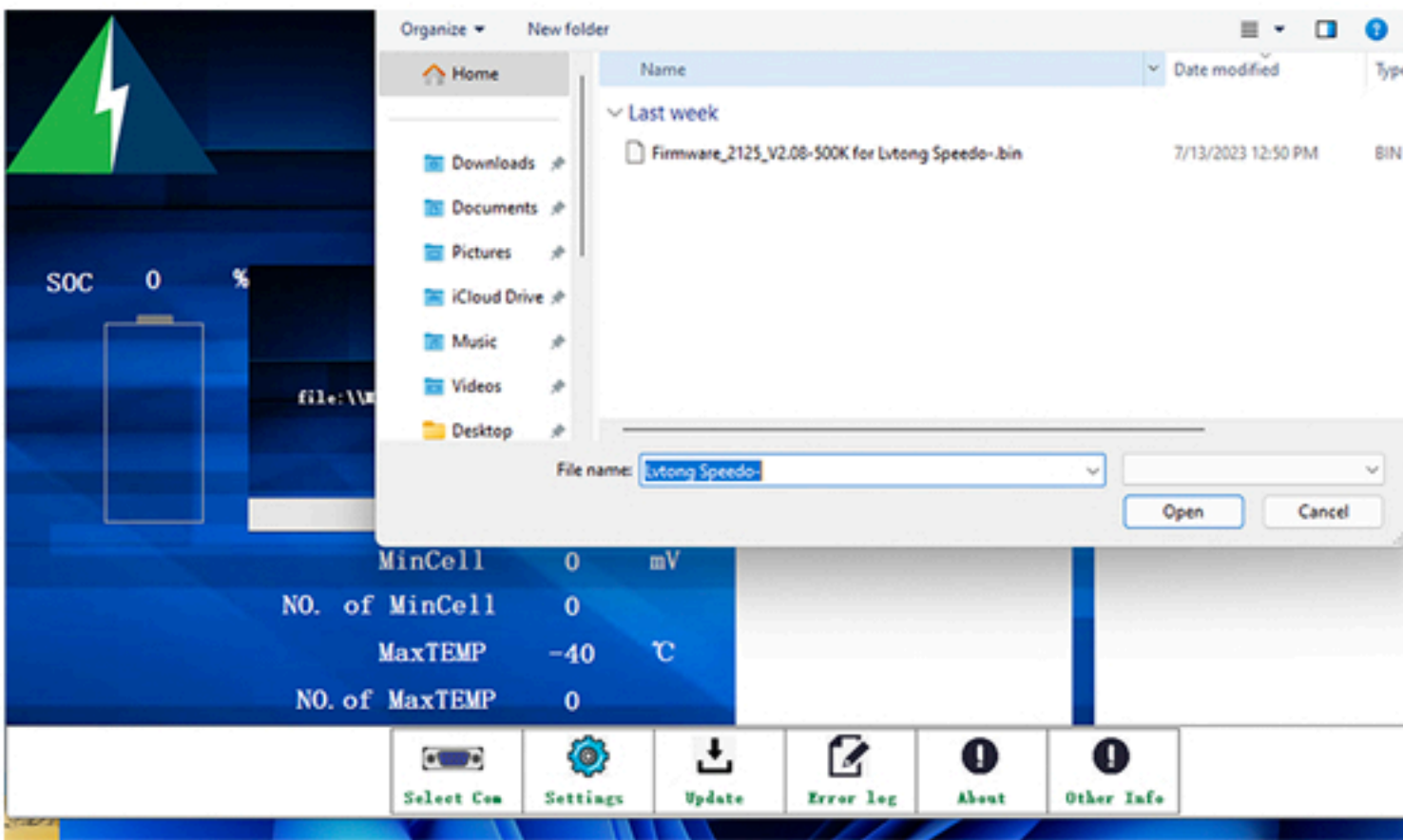


# Lvtong 827 Speedo Installation for Lithium Golf Amplus series



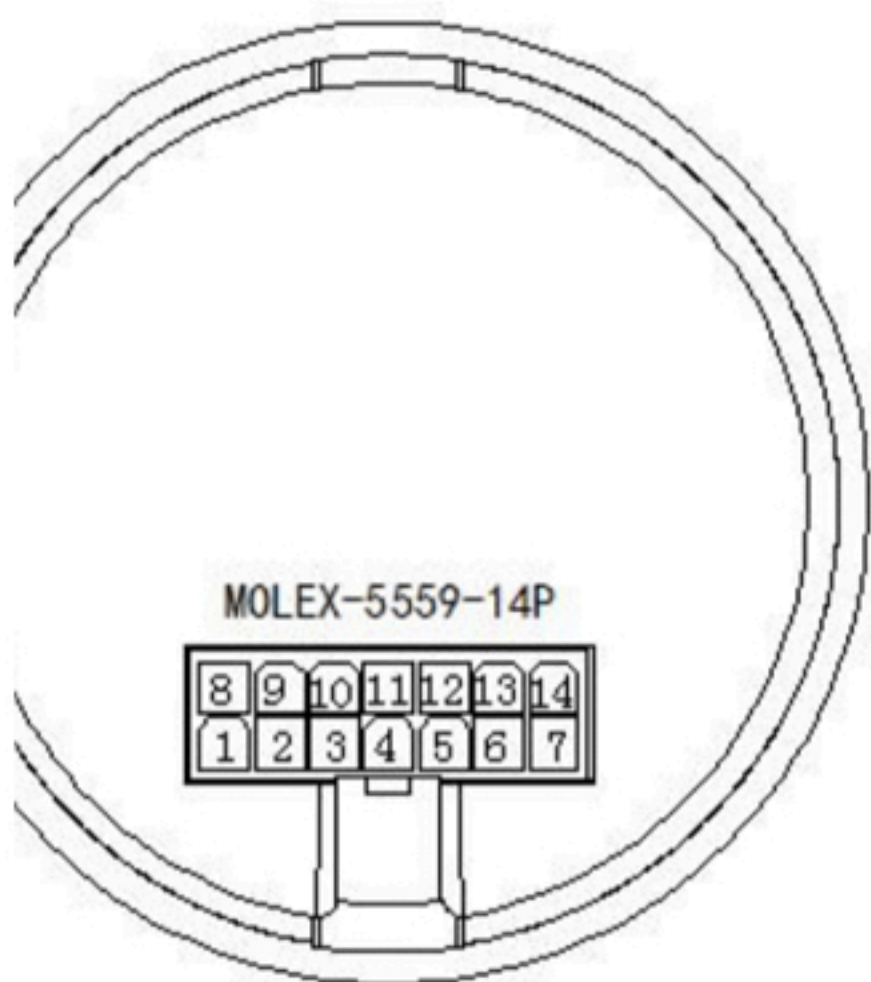
## Step 1:

Please upgrade the firmware into Lvtong speedo 500k firmware if it is not a Lvtong sylte custom production amplus. You can download from lithium golf online or ask manufactory to provide on USB stick.



## Step 2:

The original cart's white plug, PIN 8 and PIN 9 is empty, please insert the Brown cable pin into 8 and Blue cable pin into 9, and also connect another side into battery comm port. All done!



8	CANL	Brown
9	CANH	Blue

